



Artery Research

ISSN (Online): 1876-4401

ISSN (Print): 1872-9312

Journal Home Page: <https://www.atlantis-press.com/journals/artres>

P85: HIGH FRAME RATE DYNAMIC DISPLAY ULTRASOUND VECTOR FLOW IMAGING FOR QUANTITATIVE STUDIES OF HEMODYNAMICS OF CAROTID ARTERIES

Yigang Du, Xujin He, Yingying Shen, Lei Zhu, Alfredo Goddi

To cite this article: Yigang Du, Xujin He, Yingying Shen, Lei Zhu, Alfredo Goddi (2017) P85: HIGH FRAME RATE DYNAMIC DISPLAY ULTRASOUND VECTOR FLOW IMAGING FOR QUANTITATIVE STUDIES OF HEMODYNAMICS OF CAROTID ARTERIES, Artery Research 20:C, 77–77, DOI: <https://doi.org/10.1016/j.artres.2017.10.101>

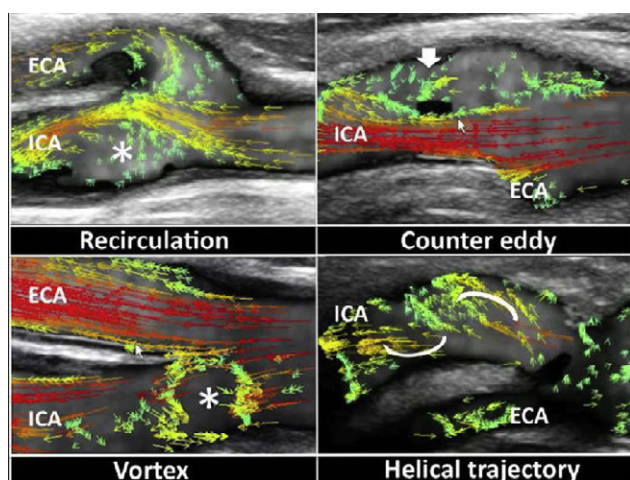
To link to this article: <https://doi.org/10.1016/j.artres.2017.10.101>

Published online: 7 December 2019

As a consequence of the local deceleration, the detachment of the boundary layer from the wall develops a disturbed flow, which impacts hemodynamics. It results in a non-uniform distribution of wall shear stress (WSS), which is responsible for atherosclerosis [1]. This phenomenon usually occurs in the carotid bifurcation (CB). Computational methods, MRI and conventional Doppler techniques have been used to establish the correlations between flow disturbance and plaque formation. We propose the use of a new method, called high-frame rate Vector Flow imaging (VFI), which dynamically visualises blood flow velocities in all directions, in the evaluation of the flow characteristics in the CB [2,3,4,5].

Methods: CB geometries and flow patterns in 30 healthy subjects of different age were evaluated using a commercial system equipped with high-frame rate VFI based on a frame rate of 600 Hz. The flow is represented by many coloured vectors, displayed as arrows, showing the different velocity, magnitude and direction at each site.

Results: The correlation between flow disturbances and carotid sinus diameter was confirmed: the more relevant the diameter, the more disturbed the flow. Different CB geometries, affecting the flow behaviours and generating complex flow, such as recirculation, counter eddy, vortex and helical trajectory, were identified (Fig 1).



Conclusions: High-frame rate VFI shows in detail the spatiotemporal characteristics of the flow and demonstrates the strong effect of vessel geometries on the flow patterns.

References

1. Younis HF, Kaazempour-Mofrad MR, Chan RC et al. Hemodynamics and wall mechanics in human carotid bifurcation and its consequences for atherogenesis: investigation of inter-individual variation. *Biomech Model Mechanobiol* 2004; 3:17–32
2. Yiu BY, Lai SS, Yu AC. Vector Projectile Imaging: Time-Resolved Dynamic Visualization of Complex Flow Patterns. *Ultrasound Med Biol* 2014; 40(9):2295–2309
3. Du Y, Fan R, Li Y. Ultrasonic imaging method and system. WO2015180069A1, 2015
4. Goddi A, Fanizza M, Bortolotto C et al. Vector Flow Imaging techniques – A new way to study vessel flow with ultrasound. *JCU* 2017. Jul 21. DOI:10.1002/jcu.22519 [Epub ahead of print]
5. Goddi A, Bortolotto C, Fiorina I et al. High-frame rate vector flow imaging of the carotid bifurcation. *Insights Imaging* 2017;8:319.

P85

HIGH FRAME RATE DYNAMIC DISPLAY ULTRASOUND VECTOR FLOW IMAGING FOR QUANTITATIVE STUDIES OF HEMODYNAMICS OF CAROTID ARTERIES

Yigang Du¹, Xujin He¹, Yingying Shen¹, Lei Zhu¹, Alfredo Goddi²

¹Shenzhen Mindray Bio-Medical Electronics Co. Ltd., Shenzhen, China

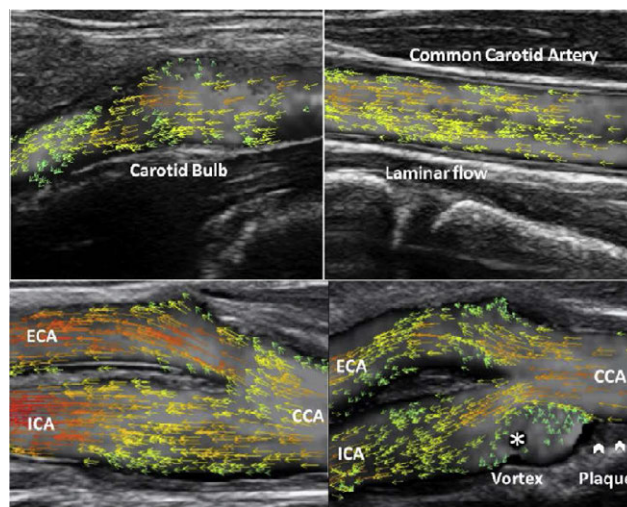
²Centro Medico SME-Diagnostica per Immagini, Varese, Italy

Advanced atherosclerotic patients are faced with significant risks of stroke, which are very likely to cause death or irreversible physical disability.

However, the growth of artery stenosis usually needs a very long development. Early diagnosis is necessary and requires detailed and accurate quantitative hemodynamics to be supported. The paper proposes an angle-independent ultrasound flow imaging technique for carotid arteries, which allows true velocity vectors measurement, obtaining both value and direction of blood flow.

The proposed vector flow imaging is implemented based on multi-directional Doppler interleaved transmission [1,2], with high frame rate dynamic display [1] and zone sonography technology [3].

Hemodynamics becomes extremely complicated when plaques develop in the carotid bulb. The dynamic display with velocity vectors assesses flow patterns, e.g. laminar flow, vortex and turbulence (Examples are shown in the figure). The circular variance for the angles of vectors in a desired region of interest can be calculated, allowing disturbance quantification for the non-laminar flow. The method is capable of measuring volume flow (VF) and wall shear stress (WSS) at different locations. To ensure the accuracy both VF and WSS are calculated based on a frame rate of 400–600 Hz and vector velocities.



The high frame rate vector flow imaging has been implemented in a commercial ultrasound system. It provides various quantitative results such as circular variance, VF and WSS, which are useful for hemodynamics studies of complex flow. This could make the early prevention and diagnosis of carotid disease possible.

References

- [1] Yiu B Y S, Lai S S M, Yu A C H. Vector projectile imaging: Time-resolved dynamic visualization of complex flow patterns. *Ultrasound in Medicine and Biology*, 2014; 40(9): 2295–2309.
- [2] Du Y, Fan R, Li Y. Ultrasonic imaging method and system. 2015, WO2015180069A1
- [3] Napolitano D J, Debusschere B D, McLaughlin G W, et al. Continuous transmit focusing method and apparatus for ultrasound imaging system. 2011, US8002705B1

Poster Session 1 – Models and Methodologies I

P120

A MODEL-BASED STUDY ON THE EVOLUTION OF BLOOD PRESSURE DURING AGEING

Stamatia Pagoulatou, Nikolaos Stergiopoulos

Laboratory of Hemodynamics and Cardiovascular Technology, EPFL, Switzerland

Background: Hypertension being a major risk factor of cardiovascular mortality, there is a pressing need to understand the ageing mechanisms that lead to the continuous increase of pulse pressure and systolic blood pressure over time. Alterations in both forward and backward waves with age have been widely recognized as key features affecting the development of